

Municipal Separate Storm Sewer System Information Guide

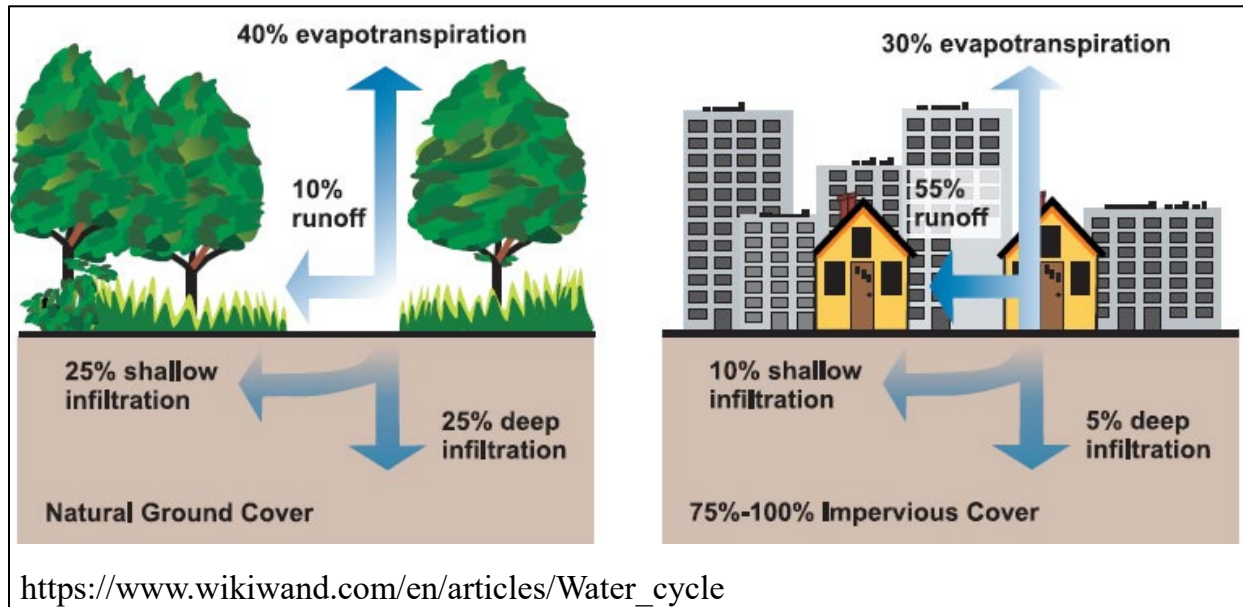
What is an MS4?

- a conveyance system of pipes, ditches, and other infrastructure
- maintained by a unit of local government or an organization responsible for the administration of a developed area
- designed to collect, convey, and discharge stormwater
- Not a combined sewer



What is Stormwater?

Stormwater occurs when rainwater or snowmelt flows over impervious surfaces such as driveways, sidewalks, and streets, preventing the water from naturally soaking into the ground. Stormwater can pick up litter, sediment, chemicals, oil, and other pollutants as it travels over the ground. MS4s are designed to manage and discharge stormwater runoff, preventing flooding and water pollution.

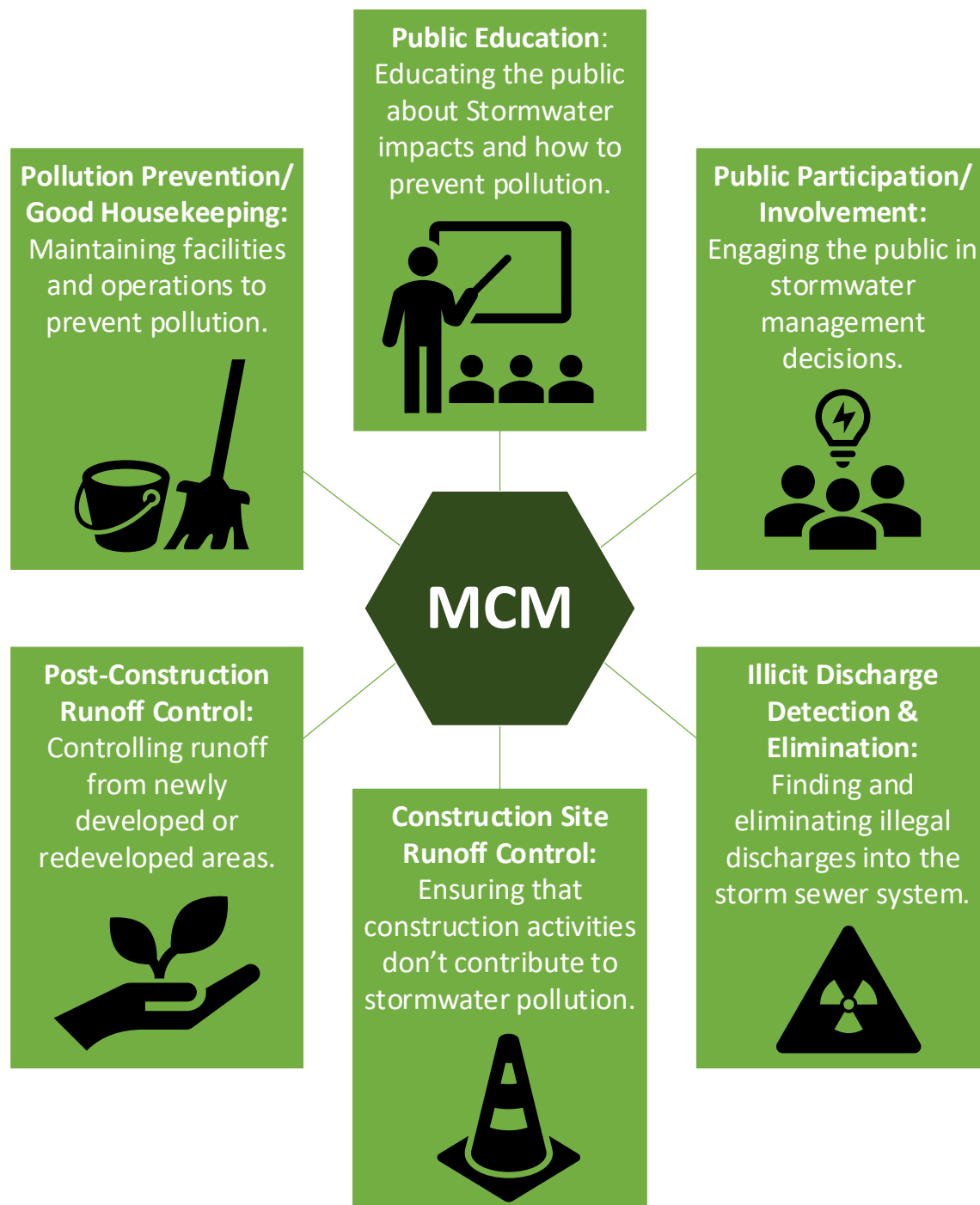


MS4 Permitting

An MS4 may only release stormwater into local creeks, rivers, and lakes under specific terms that comply with the Federal Clean Water Act. In Indiana, permission to legally discharge stormwater is granted by the Indiana Department of Environmental Management (IDEM) in partnership with the EPA through a National Pollution Discharge Elimination System (NPDES) MS4 general permit. The general permit language may be found here: [Indiana MS4 General Permit](#). Ports of Indiana—Burns Harbor was designated as an MS4 and permitted to discharge stormwater through an NPDES General Permit approved on December 18, 2021.

Pollution Prevention and Stormwater Management

To meet the terms of their NPDES Permit, all MS4s must develop a "Stormwater Management Program" (SWMP) detailing the activities that will be implemented to address stormwater runoff and improve water quality. These activities fall within six core Minimum Control Measures (MCM).



See a Problem?

Any of the following issues should be reported to Ports of Indiana as soon as possible to help prevent pollution in the waterways:

- Spills or other contaminants in storm sewers or ditches
 - White liquid or foam/bubbles
 - Cloudy water
 - Oil sheen
- Unusual discharges from pipes
- Large numbers of dead fish in waterways
- Foul odors, such as rotten eggs or chemical smells

To report stormwater quality issues, please contact POI: POIMS4Info@portsofindiana.com.

Additional information:

- [IDEM MS4 Permitting](#)
- [NPDES Stormwater Program](#)
- [Stormwater Discharges from Municipal Sources](#)