

- The Port of Indiana-Mount Vernon is served by the Evansville Western Railway, with 7-day-a-week switching service available to all tenants. The port enjoys benefits from its close proximity to a major CSX classification yard and service from a local shortline railroad.
- Headquartered in Mount Vernon, Evansville Western Railway is a full-service railroad operating on 120 miles of rail between Evansville, Ind., and Okawville, Ill. Mount Vernon, Ind., is its main terminal for origin and destination of trains.

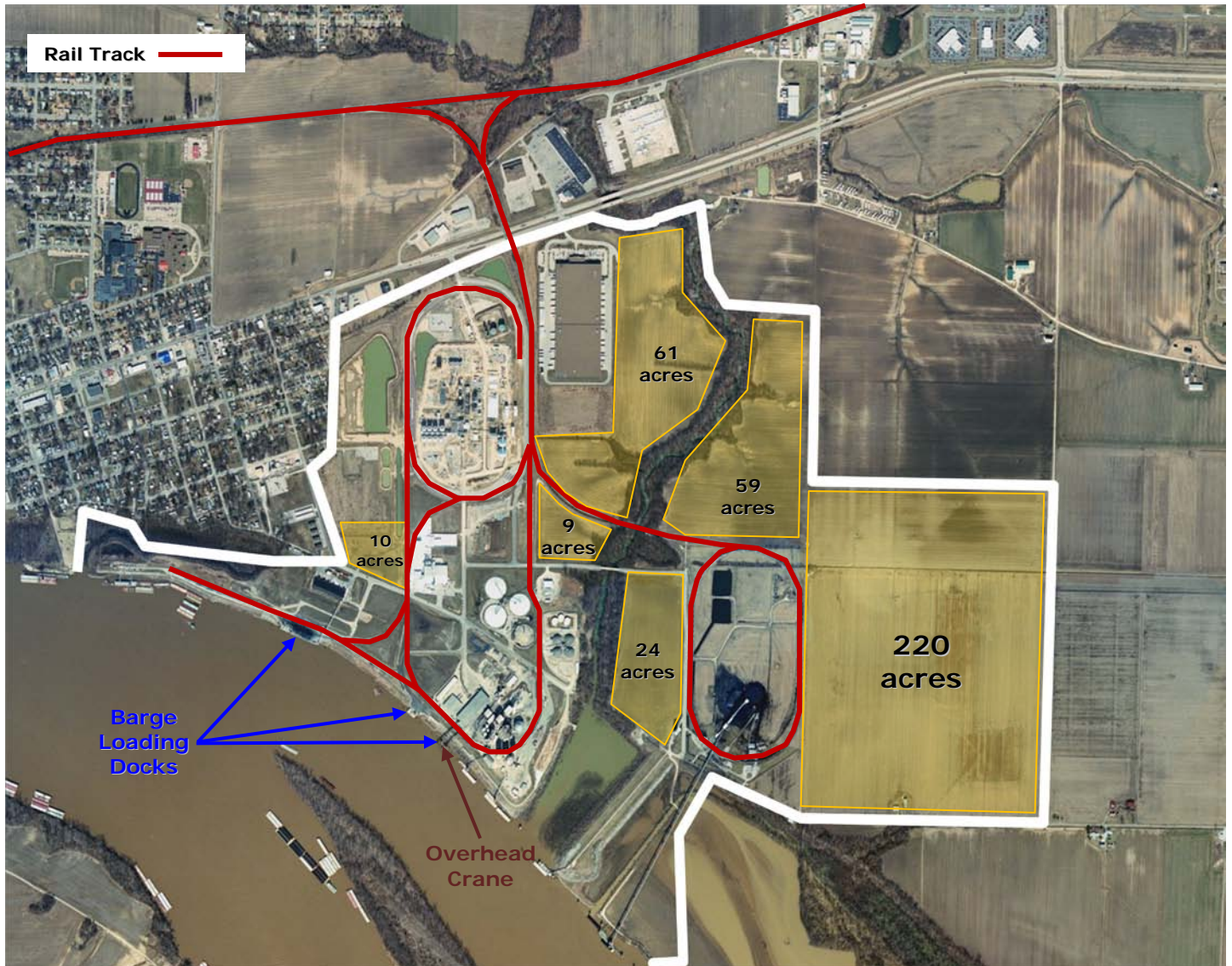
Evansville Western offers Class I interchanges with:

- UP – Mount Vernon, IL
- BNSF – Woodlawn, IL
- CSX – Evansville, IN
- CN – Ashley, IL (*potential interchange*)
- NS – Mount Vernon, IL (*potential interchange*)



- CSX has a major classification yard and an intermodal facility in Evansville at the Howell Yard, 15 miles east of the port. The CSX mainline route between Chicago and Florida passes through Howell Yard.





Port of Indiana-Mount Vernon offers rail service to all industrial sites by Evansville Western Railway with potential interchange to five Class I railroads.

Port Rail:

- 20,000 railcars move through the port each year
- 6 miles of rail tracks on port property
- 7-day-per-week rail service available
- 286,000 lbs.-gross-weight railcar capacity on port tracks
- 200+ car rail storage capacity onsite
- On-dock rail access at public piers available for port tenants
- Overhead crane allows cargo transfer for rail between barge, truck and warehouse

