

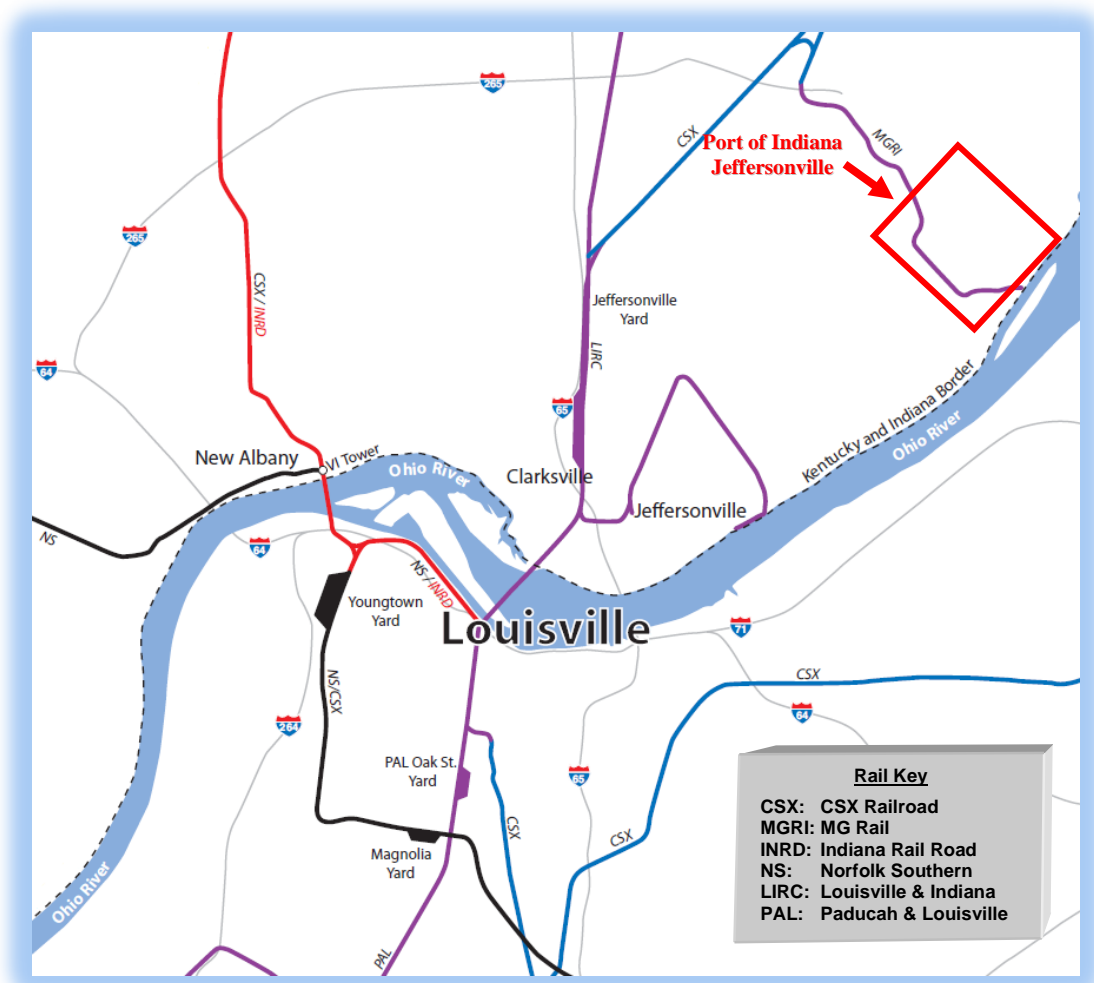
CSX maintains a switching yard adjacent to the Port of Indiana-Jeffersonville and another in Louisville just minutes away from the port.

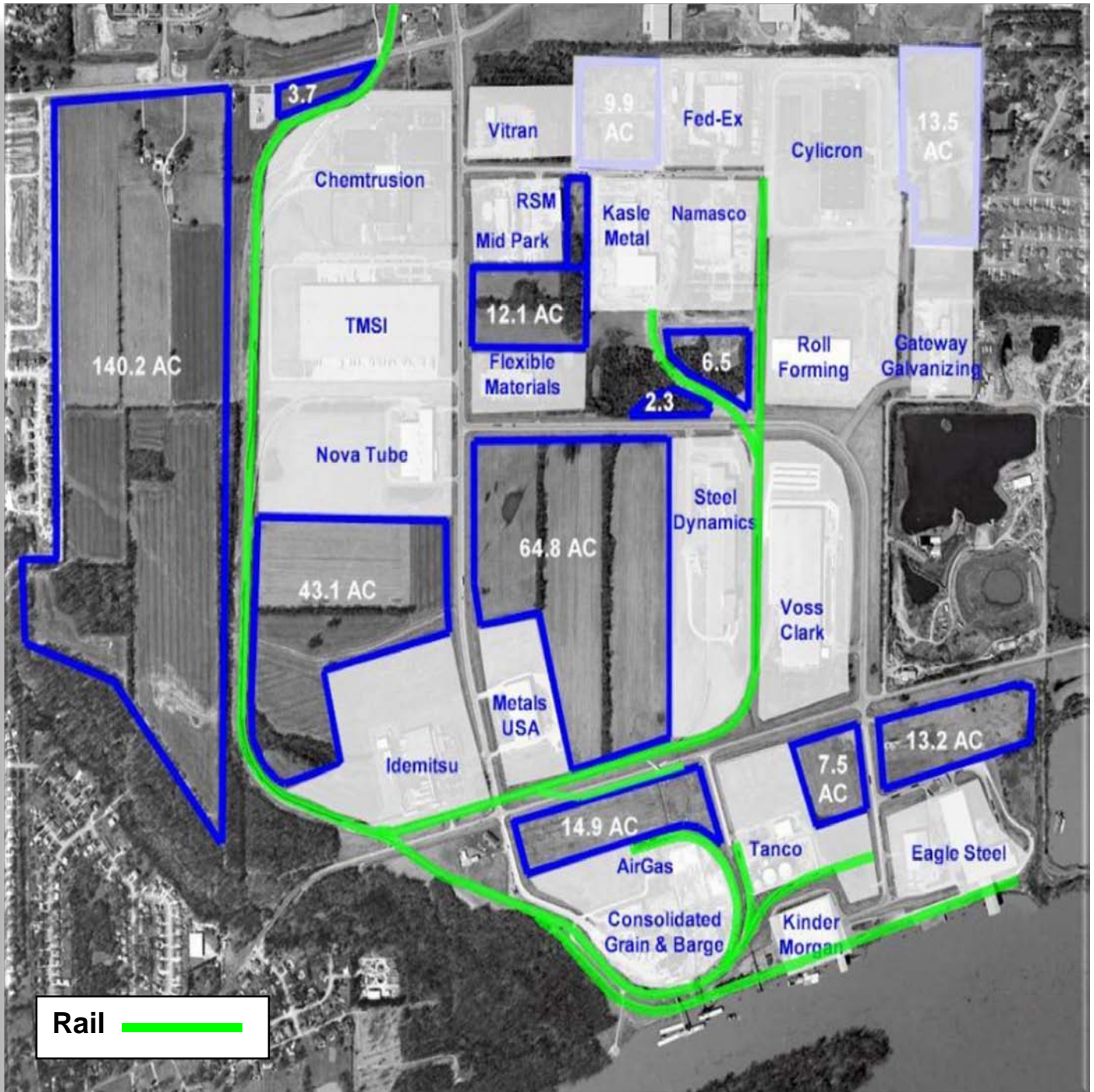
Louisville & Indiana Railroad Co. maintains a switching yard in Jeffersonville and interchanges with CSX, Indiana Rail Road and Norfolk Southern in Louisville.

- Louisville & Indiana Railroad Co. provides service from southern Indiana from Louisville to Indianapolis.
- Indiana Rail Road Co. provides service from southern Indiana and Louisville north to Terre Haute and Indianapolis.

Norfolk Southern maintains a switching yard in New Albany, 10 rail miles from the port. Piggyback service is available at Norfolk Southern’s intermodal yard in Louisville (Buechel, Ky.), about 10-15 minutes from the port.

These carriers provide interchanges with Norfolk Southern, Canadian National, Indiana Rail Road, Paducah & Louisville and CP Rail System/Soo Line.





- The Port of Indiana-Jeffersonville offers companies an intra-port shortline railroad that provides onsite switching services through MG Rail.
- Daily switching service is available to all tenants and all lines.