

The Port of Indiana-Burns Harbor is served by two railroads and offers direct interchange with 16 different railroads in nearby Chicago including all major Class Is. The Norfolk Southern and Indiana Harbor Belt railroads each provide direct service to all sites on port property.

**Indiana Harbor Belt Railroad**

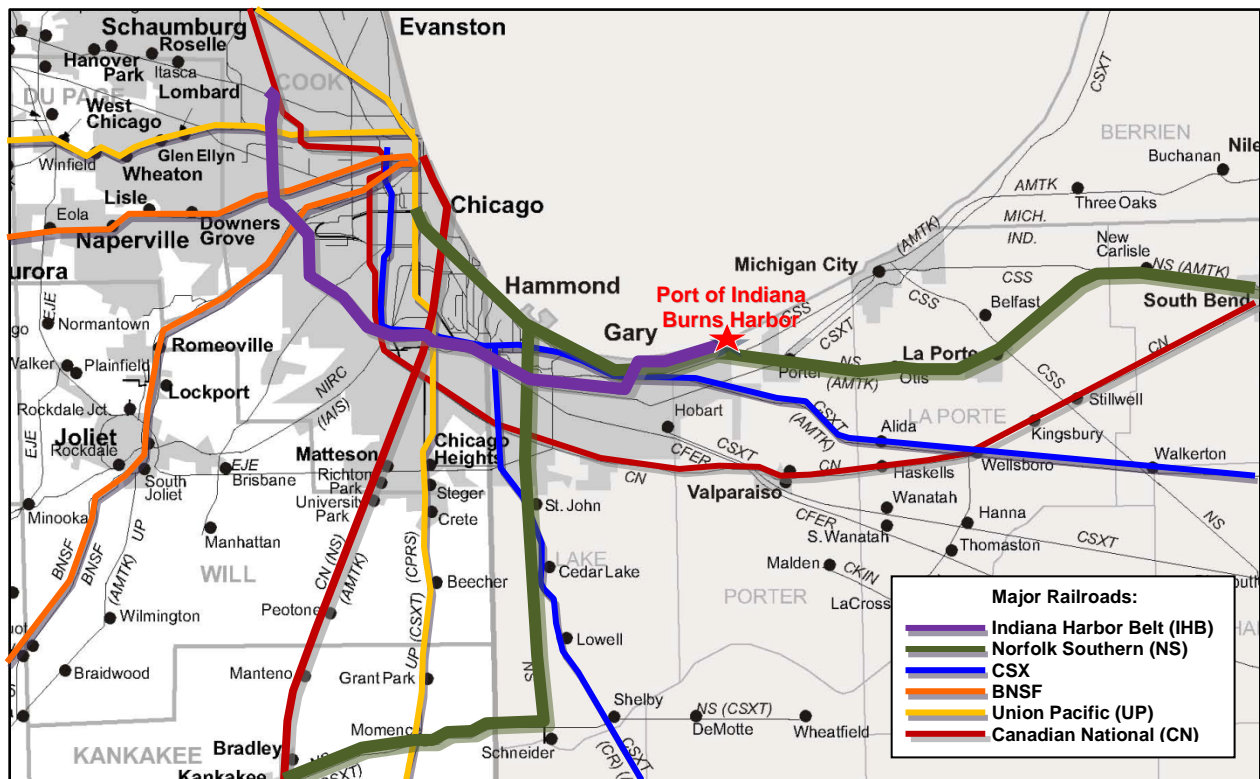


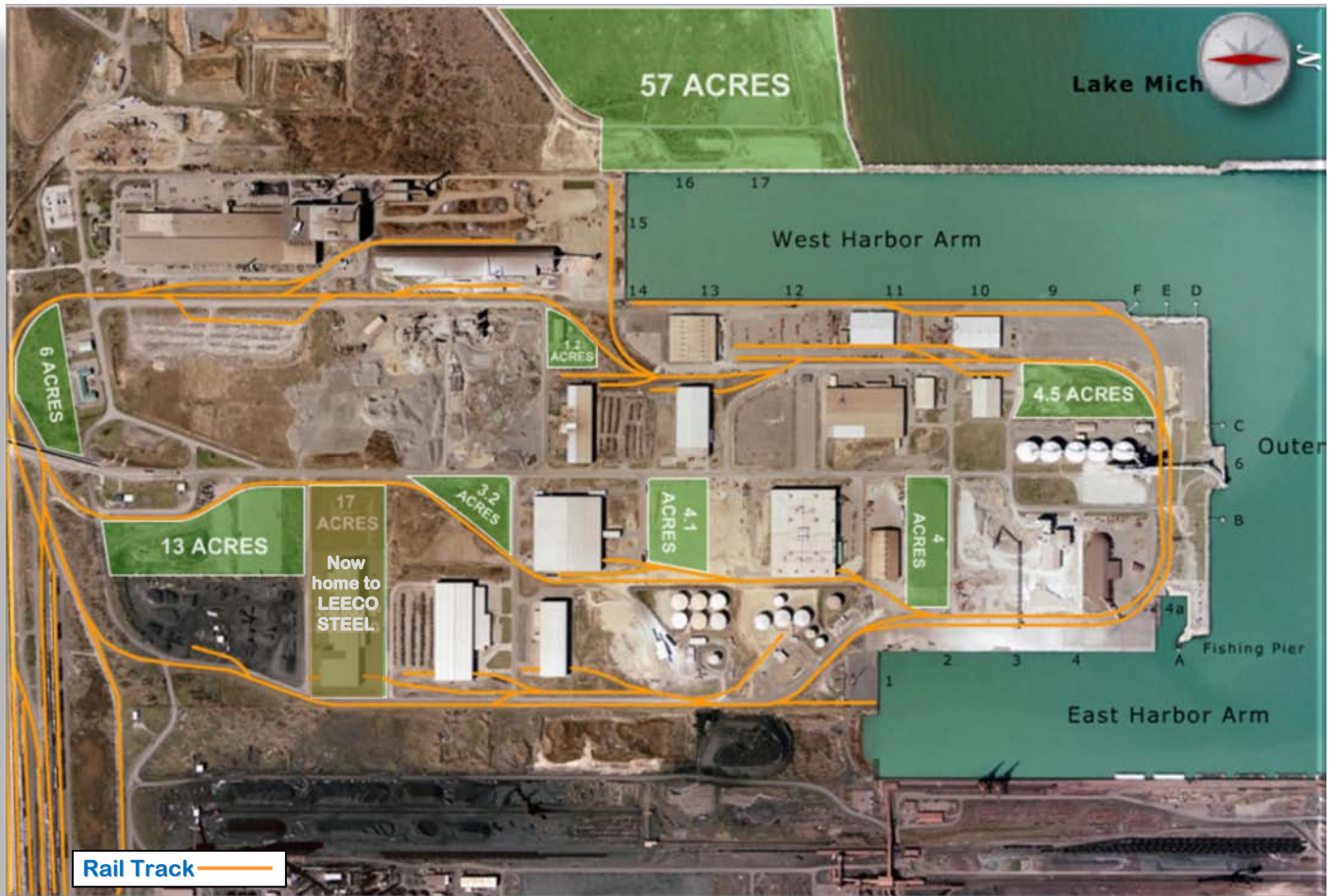
The Indiana Harbor Belt Railroad (IHB) is the largest switch carrier in the U.S. with 54 miles of mainline track (24 miles of which is double main track) and 266 miles of additional yard and siding track. The IHB interchanges daily with 16 other rail carriers in Chicago. It serves the local industrial base which includes 4 of the 5 largest steel producers in the U.S. and a large aluminum processor, oil refineries, corn millers, grain elevators, chemical plants, warehouses, lumber transloading and bulk transfer operations. The IHB also operates as an intermediate switch carrier between the 12 trunk-line railroads for traffic interchanges in Chicago generating an additional 475,000 revenue cars.

**Norfolk Southern Corp.**



Norfolk Southern Corp. is one of the nation’s premier transportation companies. It offers connections to all Class I rail carriers. Its Norfolk Southern Railway subsidiary operates approximately 21,000 route miles in 22 states and the District of Columbia, serves every major container port in the eastern United States, and provides superior connections to western rail carriers. Norfolk Southern operates the most extensive intermodal network in the East and is North America’s largest rail carrier of metals and automotive products. Norfolk Southern provides rail service to 23 seaports, nine river ports and nine Great Lake ports throughout the eastern half of the United States.





Port of Indiana-Burns Harbor offers rail service to all industrial sites by both the Norfolk Southern and Indiana Harbor Belt railroads with interchange to all major railroads in Chicago.

**Port Rail:**

- Seven miles of rail tracks on port property
- Norfolk Southern has major rail yard and East Coast-to-Chicago mainline adjacent to port
- 12,000 railcars move through the port each year
- Seven-day-per-week rail service available

